

A LETTER FROM THE COO



March 2015

Dear Model Railroader,

Welcome to the latest **Atlas All Scales Track and Accessory Catalog**. Whether you simply want to research the outstanding track pieces and accessories we produce, or use it to place an order with your local Atlas Authorized Dealer (<http://shop.atlasrr.com/storeLocator.aspx>) this publication is the definitive listing of every track product and accessory that Atlas currently makes in N, HO and O scales.

The Schaffan family has over 65 years of experience in making model railroad track products and we pride ourselves in producing the highest quality and most realistic solid nickel silver track available for model railroaders today. Atlas also offers a variety of model accessories and structures that will help turn your layout into your personal model railroad world. It is amazing to see how the addition of buildings, bridges and other accessories add that additional level of realism to your layout.

For those who want a solid design to start from, Atlas offers a variety of layout packages and books in each scale. These well known and tried packages contain all of the track and basic information to build a particular layout. All you need is the time and desire to put it together. For those of you with a slightly more adventurous and creative spirit, Atlas offers its free Atlas Track Planning Software at <http://www.atlasrr.com/software.htm>. This software allows you to create and customize your very own layout, view it as a 3D model and then generate a shopping list to make your dream layout a reality.

Thank you for choosing Atlas as your track of choice for building your model railroad world. Also realize that besides track, Atlas produces an extensive line of highly regarded model railroad rolling stock and motive power in the same offered track scales. Please see the latest Atlas All Scales Locomotive and Rolling Stock Catalog either online (<http://www.atlasrr.com/catalog.htm>) or at your local Atlas Authorized Dealer.

Thank you for your interest in Atlas Model Railroad Company, and we look forward to working with you in building your complete model railroad world in the years to come.

Sincerely,
Jarrett Schaffan Haedrich, COO
Atlas Model Railroad Co. Inc.



TABLE OF CONTENTS



INTRODUCTION

The Difference between N, HO & O.....3
 Getting started in N, HO & O..... 4-8
 Atlas Books - All Scales9
 Electrical Components - All Scales..... 10-12
 Parts & Service..... 13-16

FLEX TRACK

N, HO & O Flex Track 17-18

N SCALE TRACK

N Track Facts 19
 N True-Track® (Roadbed Track).....20-21
 N True-Track® Layout Packages.....22-25
 N Code 55 Track.....26-29
 N Code 55 Layout Packages.....30-31
 N Code 80 Track.....32-36
 N Code 80 Layout Packages.....37-41
 N Structures & Accessories.....42-46
 N Scale Lighting System 47

HO SCALE TRACK

HO Scale Lighting System 48
 HO Frequently Asked Questions 49
 HO True-Track® (Roadbed Track)50-52
 HO True-Track® Layout Packages.....53-56
 HO Code 83 Track.....57-63
 HO Code 100 Track.....64-70
 HO Code 83 & 100 Layout Packages.....71-80
 HO Structures & Accessories.....81-87

O SCALE TRACK

O Frequently Asked Questions..... 88

O 3-RAIL 21ST CENTURY TRACK SYSTEM

O 3-Rail Nickel Silver Track 89-95
 O 3-Rail Track Layouts 96-105
 Design Your Own 3-Rail Layout with Atlas O 106-108
 Atlas O Bonus Layout Plans..... 109-110

O INDUSTRIAL RAIL™ 3-RAIL TRACK SYSTEM

O 3-Rail Tinplate Roadbed Track 111-112

Connecting Atlas O 3-Rail Track..... 113

O 2-RAIL SCALE TRACK SYSTEM

O 2-Rail Nickel Silver Track 114-116
 O 2-Rail Track Layouts 117-118
 Designing Your Own 2-Rail Layout with Atlas O 119
 O Structures & Accessories 120-128
 O Scale Signal System 129-132
 O Scale Lighting System 133-134

QSI®, Quantum System™ are registered trademarks of QSI Industries, Inc.
 AccuMate® couplers are made under license from AccuRail, Inc.
 TrainMaster® Command is a registered trademark of and licensed by Lionel, LLC
 *CSX Licensed Product
 Products bearing Chicago & North Western, Rio Grande, Southern Pacific, and Union Pacific Railroad marks are made under trademark license from Union Pacific Railroad Company.

Please note: For the purpose of this catalog, photos and/or illustrations on pages may be shown larger or smaller than actual size.

Prices subject to change without prior notification. Atlas reserves the right to cancel any announced product. Any product pricing errors may be corrected at any time through notification of distributors, dealers and on our websites at www.atlasrr.com or www.atlaso.com.

Find us on....



©2015, Atlas Model Railroad Company. All rights reserved.
 378 Florence Avenue, Hillside, NJ 07205
 Phone: 908-687-0880 Fax: 908-851-2550
 www.atlasrr.com www.atlaso.com



N SCALE VS. HO SCALE VS. O SCALE



Which scale is right for you? That is the first and most important question you must answer when beginning the hobby of model railroading. Understanding model railroading terminology is essential to your knowledge and enjoyment, so let's start at the beginning.

Scale = the proportion of the model to the prototype
Gauge = the width of the track, measured between the railheads

There are three main scales of model trains to choose from. The primary determining factor is the amount of space you plan to contribute to your hobby. The smaller the scale, the less space needed to run your layout. The larger the scale, the more room is required. Your layout's shape, as well as the amount of detail and enhancements you plan to include must also be considered.



N SCALE:

N Scale is the second most popular scale and quite small, being 1:160 proportioned to the prototype. Smaller trains will mean less detail, but you can run a large layout in a smaller area than HO. The gauge on the track is 9mm.

HO SCALE:

This is the most popular scale and is 1:87 proportion to the prototype. It requires a small area for a layout, using a sheet of plywood or even a bookshelf for some of the smaller layouts, and there are many products available for HO scale modelers. The track it runs on is 16.5mm gauge.

O SCALE:

"O" is the largest of the common model trains, with a proportion of 1:48 of the prototype. This requires a larger area than HO or N for a layout and the trains are more detailed. O scale track is 1-1/4" gauge.

Extensive information regarding scales and the specifics of constructing your first layout can be found in the books detailed on page 9, and on our website.

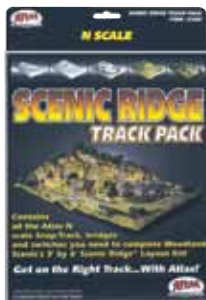


GETTING STARTED



Once you've chosen a scale, the next step is to choose a layout plan that interests you so you can begin creating your first model railroad. For a look at some of our most interesting and popular layout plans, please see pages 22-25, 30-31 & 37-41 for N scale layout plans, pages 53-56 & 71-80 for HO scale layout plans and pages 96-105, 109, 110 & 117-118 for O scale layout plans.

GETTING STARTED IN N SCALE



Item #2588 - N Scenic Ridge Track Pack

N TRACK PACK

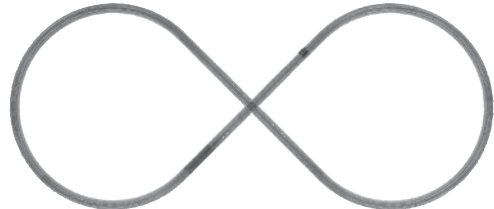
Contains all of the Atlas N Scale Code 80 track (black ties, nickel silver rail), including bridges, switches and rail joiners needed to build Woodland Scenics Scenic Ridge Layout Kit. For a complete list of all pieces, please see www.atlasrr.com/trackpack.htm



Item #2150 - N Figure 8 True-Track® Add-On Pack

N TRAINMAN® ADD-ON PACK

Turn your existing oval track set into a 24" x 56" Figure 8 with ease! The prototypical N Code 65 roadbed track features simulated ballast and gray roadbed with mottled color highlights. Figure 8 True-Track® Add-on Packs expand your existing set or add on to any True-Track® layout.



GETTING STARTED IN HO SCALE



Item #588 - Code 83 Snap-Track® Starter Set



Item #488 - True-Track® Starter Set



Item #88 - Code 100 Starter Set

HO STARTER SETS

Great starter sets are available in three different Atlas HO track lines! A snap for beginners to assemble, these sets come in Code 83 (brown ties, nickel silver rail), Code 100 (black ties, nickel silver rail) and reliable Atlas True-Track® (Code 83 track snapped into gray graveled roadbed). Each contains enough Snap-Track®, Snap-Switches and components to assemble a 38" x 56" oval layout with passing siding. Complete assembly instructions provided. Power pack sold separately, see page 11.

To order, please find a dealer near you at <http://shop.atlasrr.com/storeLocator.aspx>.



GETTING STARTED



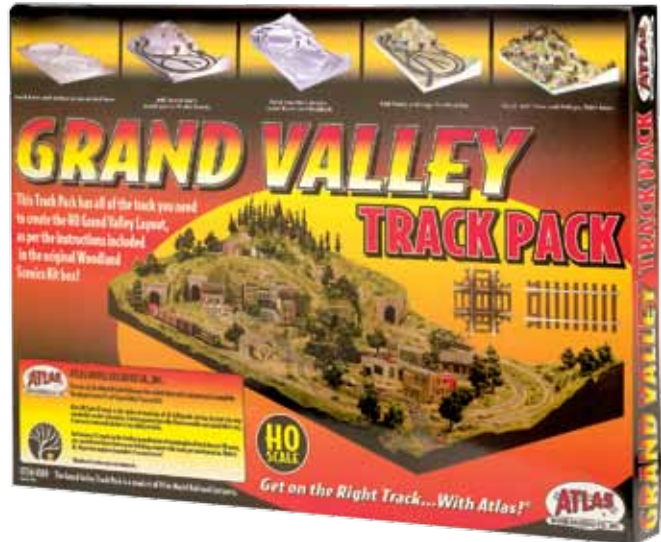
..... GETTING STARTED IN HO SCALE

HO TRACK PACKS

Contains all of the Atlas HO Scale Code 83 track (brown ties, nickel silver rail), switches, bridges and rail joiners needed to build Woodland Scenics Layout Kits. For a complete list of all track pieces, please see www.atlasrr.com/hotrackpack.htm or www.atlasrr.com/trackmisc/hotrackpackr.htm

"You're On The Right Track...With Atlas!®"

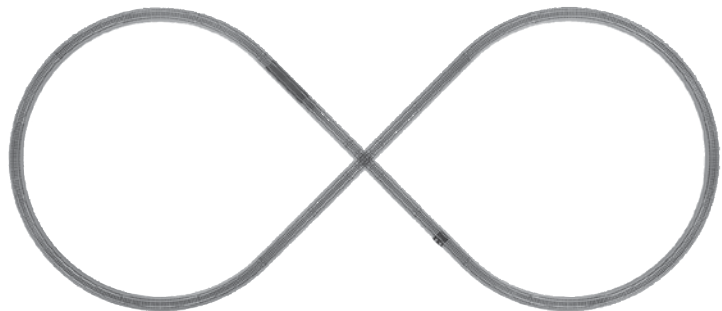
Item #589 - HO Grand Valley Track Pack



Item #0029 - HO Figure 8 True-Track® Add-On Pack

HO TRAINMAN® ADD-ON PACK

The HO True-Track® in this set features Code 83 "Snap-Track®" with realistic roadbed and accurately sized and spaced brown ties with staggered spike detail, which can be removed from the roadbed. The Figure 8 Track Add-On Pack combines with your existing Trainman® train set track to form a Figure 8. This add-on track pack turns the HO Trainman® train set 3' x 4' oval into a 4' x 8' figure eight layout.



To order, please find a dealer near you at <http://shop.atlasrr.com/storeLocator.aspx>.



GETTING STARTED



..... GETTING STARTED IN O SCALE



O STARTER SET

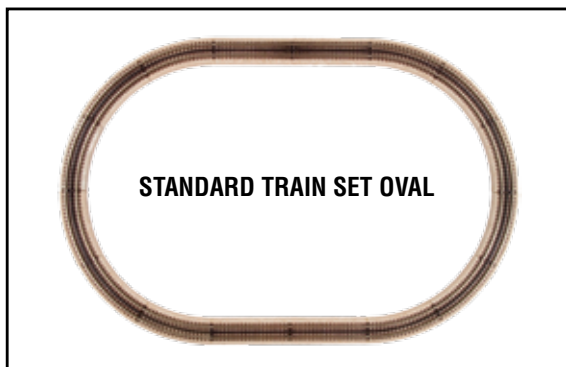
Atlas O's 21st Century Track[®] Starter Set will jump-start any level modeler into the fascinating world of model railroading! Available in 3-Rail Premium Nickel Silver, Atlas O's Starter Set will introduce you to the realism and flexibility of our popular and innovative 21st Century Track[®] System.

A snap for beginners to assemble, each set contains enough track for a basic oval configuration with O-36 diameter curves, a free Atlas Track Catalog, and a free Starter Guide to the 21st Century Track[®] System.

Item #6001 - 3-Rail Premium Nickel Silver Starter Set

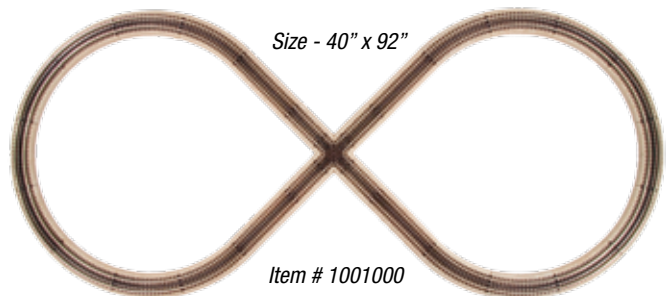
O INDUSTRIAL RAIL™ O-27 TRACK EXPANSION PACKS

Get quality and convenience at a great price! Expand your existing Industrial Rail™ layout with these easy-to-use track expansion packs, and take your first step in creating the model railroad you've always wanted.



STANDARD TRAIN SET OVAL

Take your standard roadbed loop and create something new!



Size - 40" x 92"

Item # 1001000

O FIGURE 8 EXPANSION PACK

Pieces Included: 1 piece 90° Crossing, 4 pieces 5-1/2" Straight, 6 pieces O-36 Full Curve Track

To order, please find a dealer near you at <http://shop.atlasrr.com/storeLocator.aspx>.

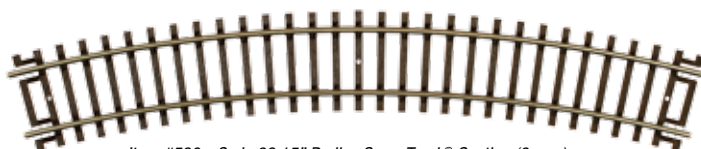


GETTING STARTED



.....HOW TO MAKE A FULL CIRCLE WITH ATLAS TRACK.....

How many pieces of Atlas Track do I need to make a full circle? That is an important question and one many modelers want to know! See below to find the answer for the scale and track you use.



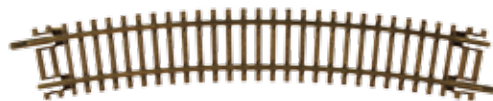
Item #530 - Code 83 15" Radius Snap-Track® Section (6 pcs.)

N CODE 55:

Radius Curve	No. of Pieces	Item #
10" Radius Curve.....	16.....	2010
11.25" Radius Curve.....	16.....	2012
12.5" Radius Curve.....	16.....	2014
13.75" Radius Curve.....	16.....	2016
15" Radius Curve.....	16.....	2018
16.25" Radius Curve.....	16.....	2020
17.5" Radius Curve.....	16.....	2022
18.75" Radius Curve.....	16.....	2024
20" Radius Curve.....	16.....	2026
21.25" Radius Curve.....	16.....	2028

N CODE 80:

Radius Curve	No. of Pieces	Item #
9 3/4" Radius Curve.....	12.....	2510, 2514
11" Radius Curve.....	12.....	2515, 2520
19" Radius Curve.....	24.....	2516, 2526



Item #2010 - Code 55 10" Radius Full Curve (6 pcs.)

HO CODE 100:

Radius Curve	No. of Pieces	Item #
15" Radius Curve.....	16.....	151, 831
18" Radius Section.....	12.....	152, 833
22" Radius Section.....	16.....	153, 836
24" Radius Section.....	16.....	837

HO CODE 83:

Radius Curve	No. of Pieces	Item #
15" Radius Curve.....	16.....	511, 530
18" Radius Section.....	12.....	512, 532
22" Radius Section.....	16.....	513, 535
24" Radius Section.....	16.....	536

O CODE 215 3-RAIL:

Radius Curve	No. of Pieces	Item #
0-27 Full Curve.....	8.....	6043
0-36 Full Curve.....	12.....	6066
0-45 Full Curve.....	12.....	6045
0-54 Full Curve.....	16.....	6060
0-63 Full Curve.....	16.....	6064
0-72 Full Curve.....	16.....	6062
0-81 Full Curve.....	16.....	6011
0-90 Full Curve.....	16.....	6013
0-99 Full Curve.....	16.....	6014
0-108 Full Curve.....	16.....	6016

O CODE 148 2-RAIL:

Radius Curve	No. of Pieces	Item #
36" Radius Full Curve.....	16.....	7062
40.5" Radius Full Curve.....	16.....	7011
45" Radius Full Curve.....	16.....	7013
49.5" Radius Full Curve.....	16.....	7014
54" Radius Full Curve.....	16.....	7016



Item #6045 - 3-Rail 0-45 Full Curve

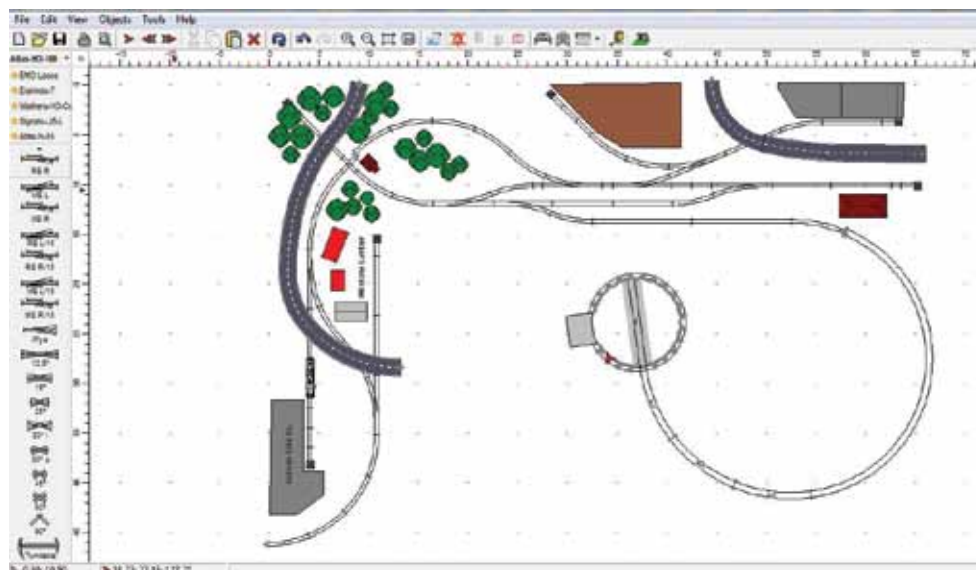


GETTING STARTED



..... ATLAS TRACK PLANNING SOFTWARE

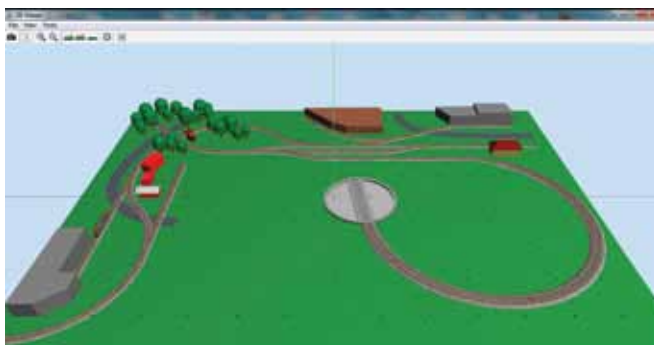
Atlas is proud to offer free Atlas Track Planning Software, available at <http://www.atlasrr.com/software.htm>. This software allows you to create and customize your very own layout, view it as a 3D model and then generate a shopping list to make your dream layout a reality.



Atlas Track Planning Software interface

Features:

- Select pieces from Atlas' 9 track lines and build your dream layout with ease
- Model flex-track routes in an easy, intuitive and realistic way
- Arrange your layout on multiple levels with different heights and grades
- Easily draw figures to create train stations, houses, industries, roads and infrastructure
- Use the 3D tool to bring your layout to life
- Measure distances and track section lengths
- Export, Print or Share your layout with your friends
- View and print a list of the Atlas track pieces you need to begin building your layout
- Layout libraries will be available with future library updates



Atlas Track Planning Software 3-D viewer



ATLAS BOOKS



With detailed diagrams, step-by-step instructions, and myriad layout options, Atlas books guide you through every phase of layout building. Each book is aimed at specific skill levels and includes the fundamentals of foundations, track laying, wiring, scenery, as well as a convenient "Products Required" list with each layout. Atlas' popular and interesting layouts can be viewed throughout this catalog!



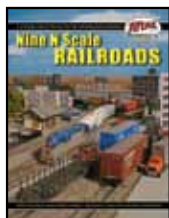
Item #6

#6 INTRODUCTION TO N SCALE MODEL RAILROADING

N scale fun starts here! This complete, easy to read book is ideal for beginners. It's all here – glossary, tools, benchwork, track laying, wiring, tips and more for nine basic layouts. (N1-N9)

#7 NINE N SCALE RAILROADS

Designed for intermediate modelers, this book details the techniques of benchwork, track laying, wiring and scenery for constructing nine engaging layouts that differ from those in book #6 in their size, detail and sophistication. (N10-N18)



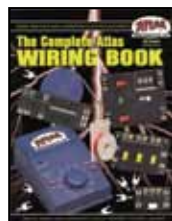
Item #7

#9 ATLAS BEGINNER'S GUIDE TO HO MODEL RAILROADING

Here's your ticket to HO fun! Clear diagrams, comprehensive instructions, tips and a chapter on "Finishing Touches" put you on the right track to a successful layout. Blueprints for 12 basic layouts allow for future expansion with either Code 83 or Code 100 track. (HO1-HO12)

#11 HO LAYOUTS FOR EVERY SPACE

Packed with guidelines, shortcuts, tips and 11 layout options for either Code 83 or Code 100 track. More than 75 detailed diagrams make this edition a must for every HO modeler! A chapter on designing your own track plan is also included. (HO13-HO23)



Item #12

#12 THE COMPLETE ATLAS WIRING BOOK

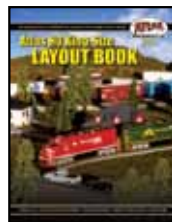
The Atlas Electrical Wiring System for all scales is made easy. Over 100 updated diagrams are complemented by a complete glossary, step-by-step instructions and advanced techniques.

#13 SEVEN STEP-BY-STEP HO RAILROADS

Whether beginner, intermediate, or advanced, every HO model railroader will find their ideal layout among the explicitly detailed and fully tested plans offered. Eliminate common pitfalls and learn from the many tips included to create your dream layout with Code 83 or Code 100 track. (HO24-HO30)

#14 HO KING-SIZE LAYOUT BOOK

For the intermediate and advanced modelers, this book contains six large layouts in an easy-to-follow scale format. Four plans fold out to become 11" x 17". Plans can be built with Code 83 or Code 100 track. (HO31-HO36)



Item #14

#15 BLUEPRINTS FOR TEN HO TRUE-TRACK® LAYOUTS

Fast and easy layouts using popular Atlas Code 83 True-Track® roadbed track. Wiring, tips, accessories and "finishing touches" are all included in this Level 1 book. (TT1-TT10)

#6008 ATLAS O 3-RAIL LAYOUT BOOK

This book is a must-have for those who have discovered the superiority of the Atlas 21st Century Track® System. Everything you need for successful layout planning and building is here!

#0140 ATLAS O, LLC 40' WOOD REEFER COLLECTOR'S GUIDE

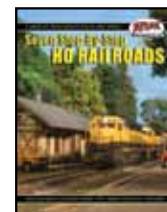
This collector's guide is filled with history, fun facts and over 100 color photos of 40' Wood Refrigerator Cars making this unique booklet a must for your O scale library.



Item #9



Item #11



Item #13



Item #15



Item #6008

To order, please find a dealer near you at <http://shop.atlasrr.com/storeLocator.aspx>.



ALL SCALE ELECTRICAL COMPONENTS



We've spent years designing and perfecting what we believe is the easiest and most reliable electrical wiring system in model railroading today. Practical for all scales, the system consists of multiple sets of the most often needed switch types, internally pre-wired by printed circuitry. With Atlas' electrical components, the magic of train operation comes to life!



#215 - Selector

SELECTOR #215

This device enables the operation and control of two trains at the same time. It has four single-pole, double-throw switches to provide two-cab operation for four blocks and may be ganged together in any number to control additional blocks without inter-switch wiring. The Selector can be used as area selectors for four-cab operation, and couples with the #220 Controller.



#210 - Twin

TWIN #210

The Twin is a component consisting of two double-pole, double-throw reversing switches wired in parallel. Useful for reversing section and turntable control on single-cab layouts, plus many other applications.



#205 - Connector

CONNECTOR #205

A device to turn electric power on or off to track section or accessories. It has three SPST on-off switches in parallel and can be coupled together in any number.



#220 - Controller

CONTROLLER #220

This Controller provides the simplest way to wire and control tricky reverse loops, wyes and turntables. It has reversing switches for two main line cabs plus a switch, selectable by either cab, for directional control on reversing loops, etc. Couples with the #215 Selector.



#56 - Switch Control Box

SWITCH CONTROL BOX #56

Controls Atlas (or other twin coil) switch machines with SPDT momentary action. Button position indicates turnout setting. It can be coupled together in any number without wiring. Switch identification labels are included.



#201 - Spade Tongue Solderless Connectors (24 pcs.)

SPADE TONGUE SOLDERLESS CONNECTOR #201

A handy small electrical hook-up connector designed for tight spaces. Used for #18-22 wire and #3 screw post. Maximum width is .218", 24 pieces per package.

SNAP RELAY #200

The Snap-Relay is a double-pole, double-throw relay with actuating mechanism driven by a momentary-power twin coil solenoid (A solenoid is a cylindrical coil of insulated wire in which an iron core is made to move back and forth by a flow of electric current). With just a few simple connections, this small device, which may be mounted anywhere, can:

- Power the frogs on Atlas' Code 83 #6 & Mark 3 turnouts in "HO" or Atlas O 2-Rail switches
- Control trackside signal lamps to show turnout point positions
- Operate control panel lamps to show settings of remotely located turnouts (switches)
- Provide selective track siding control; sidings are powered only when points are aligned for siding; siding remains "dead" when points are set for the main line
- Control X-sections automatically; this very useful track arrangement is thoroughly discussed in The Complete Atlas Wiring Book (Item #12)



#200 - Snap Relay

To order, please find a dealer near you at <http://shop.atlasrr.com/storeLocator.aspx>.



ALL SCALE ELECTRICAL COMPONENTS



ATLAS UNIVERSAL POWER PACK

Universal Power pack is made up of 2 pieces--Throttle control and Transformer

Features:

Transformer power features:

- Input 120 Volts AC 60Hz 24 Watts
- Output 16 Volts DC 1000mA 16VA

Throttle Control features:

- Dual direction switch
- On/Off function with illuminated power light
- Circuit breaker protection
- CSA Certified
- Separate accessory wire inputs
- No pulse power to damage precision motors
- Spring loaded terminal wire grabs make this perfect for beginners
- One year warranty included

#313 - Universal Power Pack
(Recommended for HO & N Scales only)



#315-319 - 20 Gauge
Layout Wire (50 ft. spools)

#312 - 5 Conductor
Ribbon Wire (50 ft.)



#6940-6944 - 16 Gauge Layout Wire
(100 ft. spools)

THE NON-DERAIL CIRCUIT BOARD - WORKS FOR ALL SCALES!

The Atlas Non-Derail Circuit Board adds enhanced operating features to Atlas and most other brands of switches. You no longer have to worry whether your switches (turnouts) are thrown correctly for safe passage of your train or rolling stock. The Atlas Non-Derail Circuit Board will give your layout automatic directional control without worry of your train and rolling stock derailing or causing a short.



#6924- Non-Derail
Circuit Board

The board will also help eliminate problematic switches (turnouts) on your pike where lighted rolling stock or locomotives cause power loss because of insufficient roller spacing.

Features:

- Electronic non-derailing works for ALL scales, be it 3-Rail or 2-Rail
- Power routing of closure rails
- Fully compatible with TMCC/Legacy, DCS, DCC and standard AC/DC control systems
- Interfaces with the Atlas O 21st Century Signal® System
- Will control two switches or turnouts
- Automatic polarity reversing on 2-rail systems

To order, please find a dealer near you at <http://shop.atlasrr.com/storeLocator.aspx..>



ALL SCALE ELECTRICAL COMPONENTS



HEAVY DUTY ELECTRICAL COMPONENTS

Introduced by Atlas O, these electrical components are perfect for all scales and feature an upgraded, heavy-duty design. This allows modelers to run higher amperage AC/DC command control systems and all large-scale trains.



#6927 - HD Connector

HD Connector

This handy component contains three single-pole, single-throw on/off switches in parallel. Can be used to turn power on or off to track selections and accessories. Can be used with AC or DC power. New heavy duty design compatible with higher amperage AC/DC command control systems and all large-scale trains. May be ganged together in any number.



#6928 - HD Twin

HD Selector

One of the mainstays of conventional layout control, this component enables the operation and control of two trains at the same time when they are running conventionally. Has four single-pole, double-throw switches that allow two-cab operation of four blocks. Can also be used as area selectors for four-cab operation. New heavy duty design compatible with higher amperage AC/DC command control systems and all large-scale trains. May be ganged together in any number to control additional blocks as required.



#6929 - HD Selector

HD Twin

Consists of two double-pole, double-throw reversing switches wired in parallel. Useful for control of reversing sections as well as turntable operation on single-cab layouts. New heavy duty design compatible with higher amperage AC/DC command control systems and all large-scale trains.

30 WATT TRANSFORMER (AC)

Features:

- UL Listed
- Traditional design
- 0-14 volt variable AC output
- On/off power switch
- Power and overload indicators
- Suitable for small AC-powered train sets
- Perfect in all scales as a variable AC accessory power supply



#1000030 -
30 Watt Transformer

To order, please find a dealer near you at <http://shop.atlasrr.com/storeLocator.aspx>.

PARTS & SERVICE



The Atlas Parts Department is always striving to serve you better. Parts orders placed by phone are processed promptly, provided the parts are in stock. You may email Atlas at parts@atlasrr.com or call 908-687-0880 during business hours and ask for Customer Service. To view parts diagrams and/or order parts online, visit www.atlasrr.com/hoparts.htm or www.atlasrr.com/nparts.htm

Below are just a few of the over 2,000 parts that Atlas offers to keep you on the Right Track!

..... HO & N SCALE RAIL JOINERS AND TRACK NAILS

Rail joiners are small clips used to join two sections of track mechanically. They come in metal (nickel silver) which also connects the rails electrically, and plastic which are insulated to isolate the two sections of track electrically.



Item #2535 - N Code 80 Rail Joiners (48 pcs.)



Item #170 - HO Code 83/Code 100 Universal Rail Joiners (48 pcs.)



Item #551 - HO Transition Joiners (12 pcs.)
(Connects Code 83 to Code 100)



Item #2539 - N Code 80 Terminal Joiners (1 pair)



Item #2540 - Track Nails (2 oz.)
(For both N & HO Scales)



Item #2090 -
N Code 55 Metal Rail Joiners
(24 pcs.)



Item #2092 - N Code 55 Terminal Joiners (1 pair)



Item #842 - HO Code 100 Terminal Joiners (1 pair)



Item #553 - HO Code 83 Terminal Joiners (1 pair)



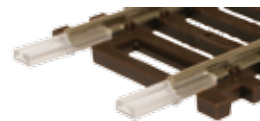
Item #55 - HO Code 100 Plastic Insulating Joiners (24 pcs.)



Item #2538 - N Code 80 Plastic Insulating Rail Joiners
(24 pcs.)



Item #2091 - N Code 55 Insulated Rail Joiners



Item #552 - HO Code 83 Plastic Insulating
Joiners (24 pcs.)

To order, please find a dealer near you at <http://shop.atlasrr.com/storeLocator.aspx>.

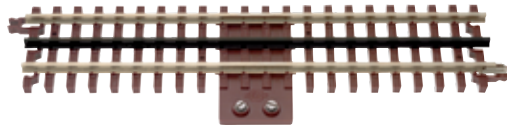


PARTS & SERVICE



..... **O SCALE RAIL JOINERS AND TRACK SCREWS**

3-RAIL



Item #6010 - 10" Straight Terminal Section



Item #6097 - Accessory Rails
Used to activate Lionel® operating cars that are equipped with sliding shoes. Accessory rails can be mounted on any 10" straight track section (track not included with accessory rails).



Item #6090 - Terminal Joiners (1 pair)



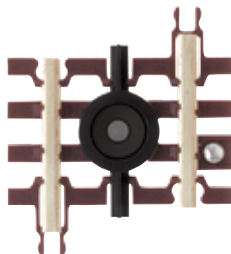
Item #6091 - Nickel Silver Rail Joiners (16 pcs.)



Item #6092 - Black Rail Joiners (16 pcs.)



Item #6093 - Insulated Rail Joiners (16 pcs.)



Item #6059 - 1-3/4"

Uncoupling Track

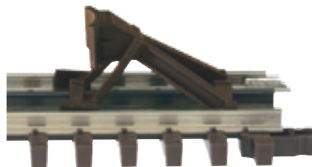
Used to uncouple cars with the traditional plunger-type magnetic couplers. It has one terminal post to connect to a fixed or variable post on your transformer. Comes with wire and control button.



Item #6095 - Tubular Transition Joiners (6 pcs.)



Item #6096 - Gargraves Transition Joiners (6 pcs.)



Item #6040 - Bumper (2 pcs. - Track not Included)
(For both 3-Rail & 2-Rail)



Item #6094 - Track Screws (48 pcs.)
(For both 3-Rail & 2-Rail)

..... **2-RAIL**



Item #7090 - Terminal Joiners (1 pair)



Item #7091 - Nickel Silver Rail Joiners (16 pcs.)



Item #7093 - Insulated Rail Joiner (16 pcs.)

To order, please find a dealer near you at <http://shop.atlasrr.com/storeLocator.aspx>.



PARTS & SERVICE



N SCALE WHEELS



Item #22020 - 33" Blackened Metal Wheels (12 axles)



Item #22036 - 36" Blackened Metal Wheels (12 axles)



Item #22134/22135/22136 - 33" Plastic Low-Profile Wheels for MicroTrains® Trucks (24/48/100 axles)

N SCALE TRUCKS & PARTS



Item #22050 - Friction Bearing Trucks w/ Rapido Couplers (1 pair)



Item #22051 - Friction Bearing 50-Ton Trucks w/ Accumate® Couplers (1 pair)



Item #22055 - Roller Bearing Trucks w/ Rapido Couplers (1 pair)



Item #22056 - 70-Ton Roller Bearing Trucks w/ Accumate® Couplers (1 pair)



Item #22060 - Roller Bearing Caboose Trucks without Couplers (1 pair)



Item #22061 - Friction Bearing Caboose Trucks without Couplers (1 pair)



Item #22070 - 100-Ton Roller Bearing Trucks w/ Rapido Couplers (1 pair)



Item #22071 - 100-Ton Roller Bearing Trucks w/ Accumate® Couplers (1 pair)



Item #22076 - 40-Ton Friction Bearing Trucks w/ Accumate® Couplers (1 pair)



Item #22081 - 70-Ton Roller Bearing Trucks w/ Accumate® Extended Couplers (1 pair)

HO SCALE WHEELS



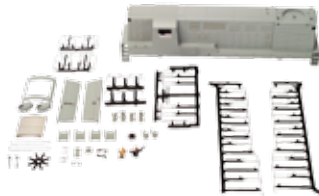
Item #180100 - 33" Metal Wheels for Atlas Freight Cars (100 axles)

(Note: Atlas' HO wheels do not fit other manufacturer's truck frames.)

ALL SCALE



Item #194 Atlas Track Cleaner



Body Shell Assembly (Atlas sells body shell assemblies for all HO & N locomotives and freight cars. O scale parts sold individually. Call for availability.)



Motor/Flywheel Assembly (Motor/Flywheel assemblies are available for most locomotives - Call for availability.)



Item #193 Locomotive & Track Maintenance Pack Contains .5oz of #190 Gear Lubricant, 1oz of #191 Motor Bearing Heavy Duty Lube and 1oz of #192 Conducta Lube Cleaner.

Items also available for separate sale.

To order, please find a dealer near you at <http://shop.atlasrr.com/storeLocator.aspx>.



PARTS & SERVICE



HO SCALE TRUCKS WITHOUT COUPLERS



Item #180000 - 70-Ton Roller-Bearing Trucks (1 pair)



Item #185000 - 55-Ton Bettendorf Friction Bearing Trucks (1 pair)



Item #190000 - Barber-Bettendorf Roller-Bearing Caboose Trucks (1 pair)



Item #191000 - Barber-Bettendorf Friction Bearing Caboose Trucks (1 pair)



Item #192000 - 70-Ton Friction Bearing National C-1 Trucks (1 pair)



Item #195000 - 100-Ton Roller-Bearing Trucks (1 pair)

O SCALE TRUCKS 3-RAIL



Item #66029 - 3-Rail Commonwealth Express Car Trucks (1 pair)



Item #66030 - 3-Rail 100-Ton Roller Bearing Trucks (1 pair)



Item #66031 - 3-Rail Roller Bearing Caboose Trucks (1 pair)



Item #66032 - 3-Rail 50-Ton Barber-Bettendorf Trucks (1 pair)



Item #66033 - 3-Rail Andrews Trucks (1 pair)



Item #66034 - 3-Rail 70-Ton Roller Bearing Trucks (1 pair)



Item #66035 - 3-Rail Friction Bearing Caboose Trucks (1 pair)



Item #66036 - 3-Rail 70-Ton Modified Friction Bearing Trucks (1 pair)



Item #6945 - 50-Ton Adjust-A-Couplers® (2 pair)
(Note: Older trucks may have to be modified to fit the Adjust-A-Couplers®)
Item #6945 will only fit item #6032 and item #6946 will only fit item #6034



Item #6946 - 70-Ton Adjust-A-Couplers® (2 pair)
(Note: Older trucks may have to be modified to fit the Adjust-A-Couplers®)
Item #6945 will only fit item #6032 and item #6946 will only fit item #6034

2-RAIL



Item #7064 - 2-Rail 50 Ton Barber-Bettendorf Trucks (1 pair)



Item #7065 - 2-Rail 70 Ton Roller Bearing Trucks (1 pair)



Item #7066 - 2-Rail 100 Ton Roller Bearing Trucks (1 pair)



Item #7067 - 2-Rail Andrews Trucks (1 pair)



Item #7068 - 2-Rail Roller Bearing Caboose Trucks (1 pair)



Item #7069 - 2-Rail Commonwealth Express Trucks (1 pair)



Item #7057 - 2 Rail Die-Cast Replacement Coupler with Springs



Item #7038 - 2-Rail Electro Couplers (1 pair)



Item #7039 - 2-Rail Die-Cast Couplers (2 pair)



Item #7036 - 3-Rail to 2-Rail Retrofit Kit (4 scale 36" Wheel sets and a pair of couplers; not compatible with rotating bearing caps)



Item #7037 - 3-Rail to 2-Rail Retrofit Kit (4 scale 33" Wheel sets and a pair of couplers; not compatible with rotating bearing caps)

To order, please find a dealer near you at <http://shop.atlasrr.com/storeLocator.aspx>.



N, HO & O SCALE FLEX-TRACK



ABOUT ATLAS SUPER-FLEX TRACK®

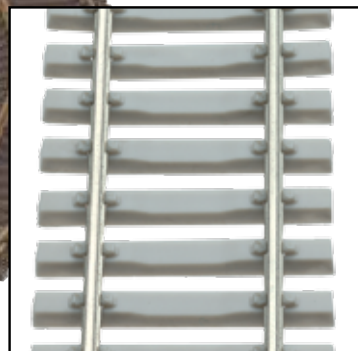
Our most popular product is renowned worldwide for its superiority, versatility and performance. Invented and patented by Atlas founder Stephen J. Schaffan Jr., this innovative, finely engineered precision track is the first choice of experts who demand the best.

Economical and easy to install, Super-Flex Track® enhances the realism of your layout. Unlike other curvable track which can “kink” when flexed, Atlas flexible track can be formed and re-formed to achieve the desired shape with ease. This unique track can be shaped to form curves of any radius, is ideal for spiral easement curves and is easily manipulated to help you make your layout visions reality. Atlas Super-Flex Track® is available in HO, N and O Scale versions.

Item #168 - HO Code 100 Super-Flex Track® - 36" Section



Item #178 - HO Code 100 "5 Pack"- 5 Pieces of 36" Super-Flex Track®



(Item #502 - HO Code 83 Concrete Tie Super-Flex® Track)

HOW TO USE SUPER-FLEX TRACK®

Super-Flex Track® has one stationary rail and one that slides, allowing it to bend easily. When bending the Flex-Track into the desired shape, you must keep in mind that the sliding rail should always be on the inside of the curve (closest to the center of your layout plan).

Once you are sure the sliding rail is facing the right way, tack the track loosely (in case you need to move it later) to your tabletop, then clip the excess rail, making it even with the stationary rail.

It can be cut easily to any needed length with any hobby saw, including Atlas' own Item #400 Modeler's Super Saw.

(Note: Some HO Code 83 Flex-Track has two rails that slide, which makes the track more flexible, but installation may differ.)



Item #500 - HO Code 83 Super-Flex Track®

Item #400 - Modeler's Super Saw



N, HO & O SCALE FLEX-TRACK



ABOUT ATLAS O CUSTOM-FLEX® TRACK

Our patented Custom-Flex® Track enables you to duplicate prototypical trackwork where sectional track cannot be used. Available in 3-rail and 2-rail with simulated wood ties, the track comes in 40" long sections.

The ability of our Custom-Flex® to bend without kinking (and return to straight profile easily) will allow you to reproduce realistic, spiral easement curves and other prototypical track arrangements. Since it has been engineered for easy installation, you will enjoy laying our Custom-Flex® on your next railroad.



(Item #7056 - 2-Rail
40" Flex-Track with
Simulated Wood Ties)

Atlas O also offers a finishing piece when using Custom-Flex® track or any track section that has been cut and a finished end is desired. The end section contains a snap lock and is available for the simulated wood tie and concrete sections. (See listing)

**"You're On The
Right Track...With
Atlas!®"**

TIPS FOR LAYING CUSTOM-FLEX® TRACK

1. Draw a centerline on your table to serve as a guide for laying Custom-Flex®.
2. Connect one end of Custom-Flex® to your existing track, making sure the snap-locks are secure and the rails are flush with each other.
3. Remove the last three ties from the opposite end of the Custom-Flex® section. (The Atlas Modeler's Super Saw, Item #400 works well for this.)
4. Bend the Custom-Flex® along the centerline you have drawn on the platform. Secure the track with Atlas O track screws, Item #6094 as you go along.
5. Trim the rails at the free end using a Dremel® tool with a cut-off disc. The rails should be cut evenly across.
6. Slide on the end snap you had removed previously. You now have a finished track end, which ensures the track will not kink at the junction between Custom-Flex® sections.
7. Repeat as often as necessary.



Item #6056 - 3-Rail
40" Custom-Flex® with Simulated
Wood Ties

